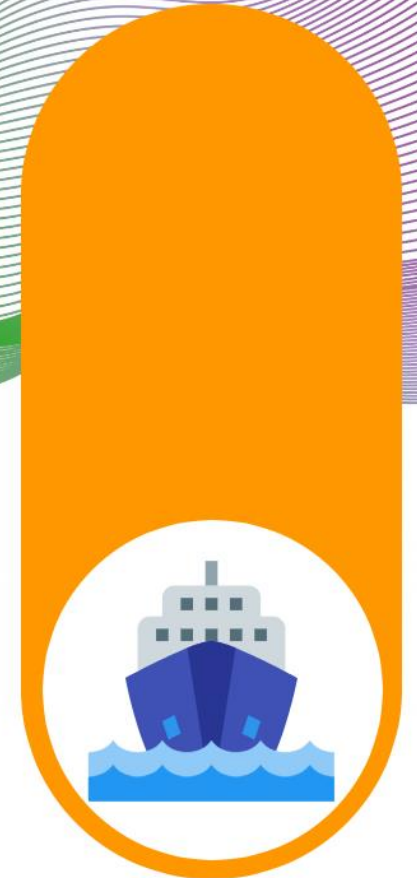




# Port Statistics

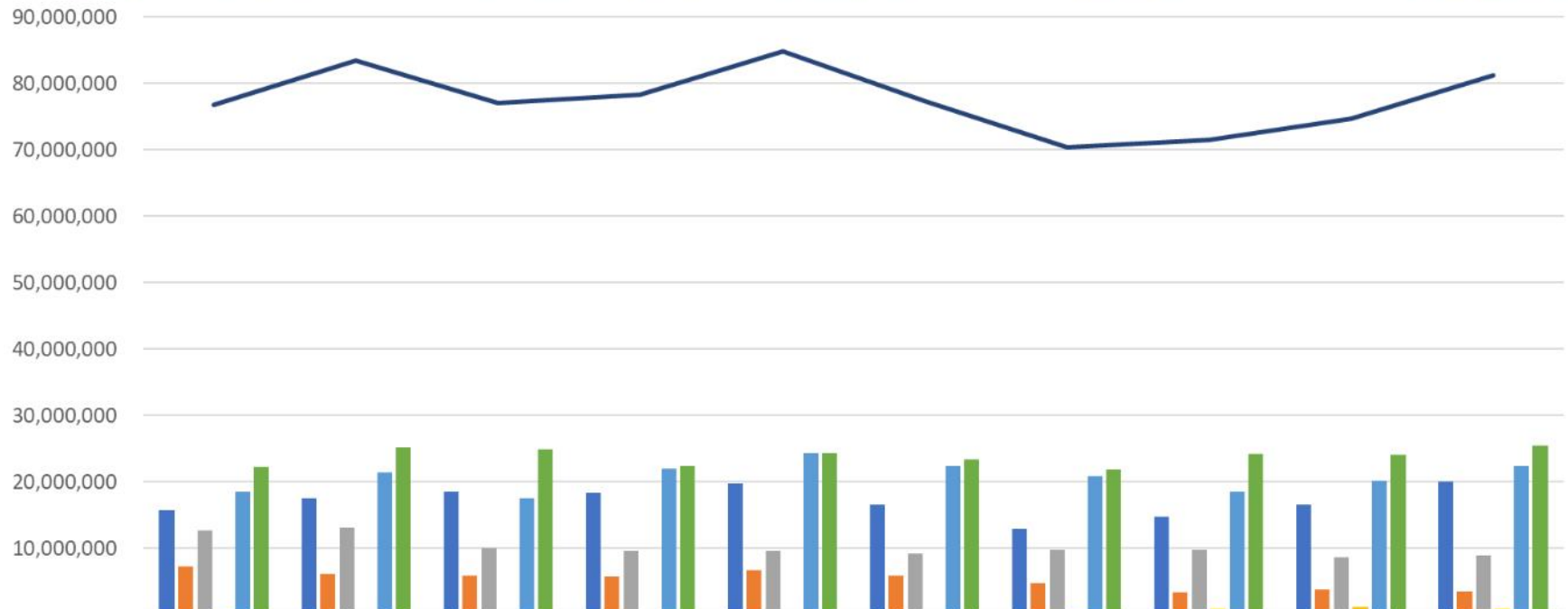
Vessel Traffic | Container Traffic | Throughput



**NIGERIAN PORTS AUTHORITY**

# CARGO THROUGHPUT

CLASSIFIED BY TYPE OF CARGO  
2010 - 2019



	2010	2011	2012	2013	2014	2015	2016	2017	2018	2019
GENERAL CARGO IN	15,785,945	17,520,739	18,588,674	18,340,824	19,704,622	16,536,170	12,928,599	14,801,528	16,646,263	20,076,178
GENERAL CARGO OUT	7,253,946	6,176,484	5,894,150	5,733,300	6,669,876	5,897,034	4,741,185	3,323,008	3,851,349	3,518,217
DRY BULK IN	12,683,482	13,082,771	10,102,158	9,693,134	9,651,053	9,170,517	9,704,453	9,818,494	8,729,495	8,887,067
DRY BULK OUT	285,015	28,557	61,584	137,399	44,973	36,101	339,662	825,624	1,153,313	937,662
LIQUID BULK IN	18,459,421	21,406,930	17,531,295	21,971,645	24,417,851	22,404,674	20,837,594	18,479,066	20,230,127	22,453,239
LIQUID BULK OUT	22,276,918	25,234,551	24,914,764	22,405,332	24,412,213	23,343,142	21,813,543	24,287,916	24,066,957	25,404,145
GRAND TOTAL	76,744,727	83,450,032	77,092,625	78,281,634	84,900,588	77,387,638	70,365,036	71,535,636	74,677,504	81,276,508

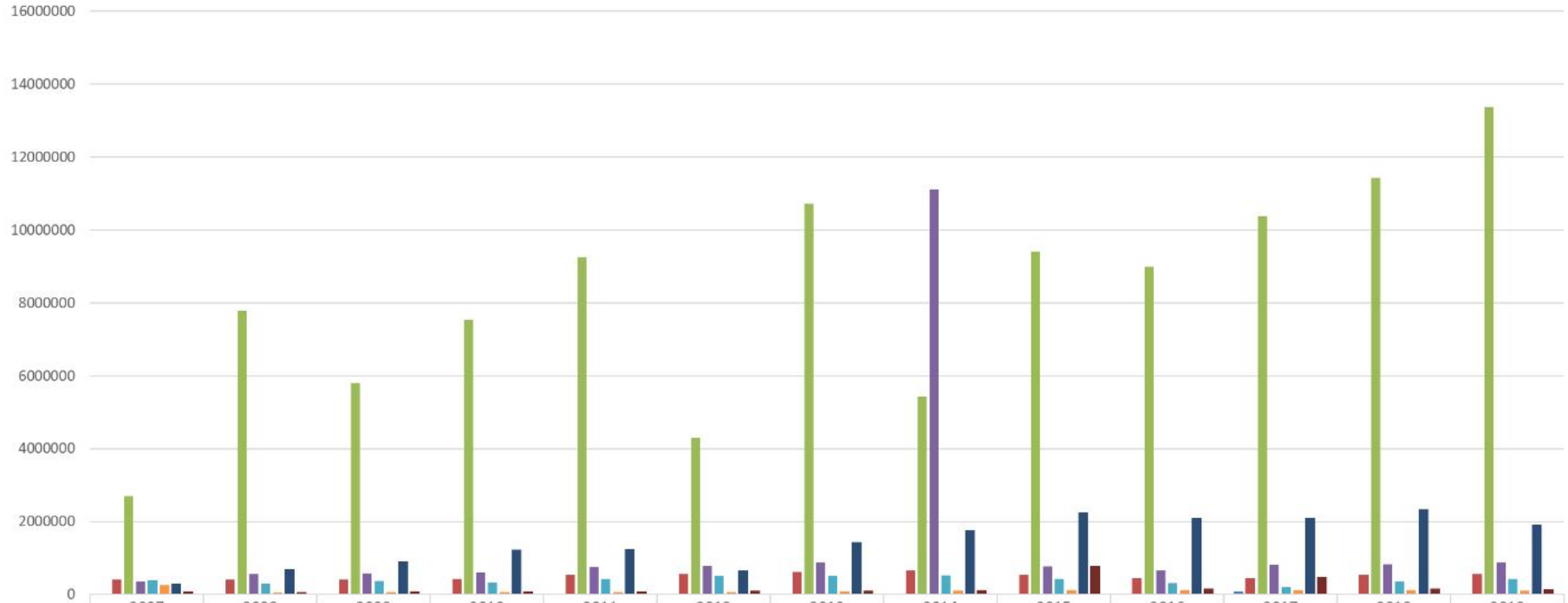
■ GENERAL CARGO IN  
 ■ GENERAL CARGO OUT  
 ■ DRY BULK IN  
 ■ DRY BULK OUT  
 ■ LIQUID BULK IN  
 ■ LIQUID BULK OUT  
 — GRAND TOTAL





# CONTAINER TRAFFIC

CLASSIFIED BY INWARD/OUTWARD  
2007 - 2019



	2007	2008	2009	2010	2011	2012	2013	2014	2015	2016	2017	2018	2019
■ INWARD NO. OF EMPTIES	979	2,844	177	738	97	273	437	107	126	7,839	85,263	17434	1119
■ INWARD LADEN NO.	407,828	400,119	416,351	430,923	536,719	556,900	623,409	646,539	534,223	447,415	442,290	537,330	566,538
■ INWARD LADEN TONN.	2,697,353	7,794,894	5,802,550	7,534,972	9,252,781	4,298,373	10,729,910	5,428,846	9,419,672	8,991,345	10,379,152	11,434,687	13,381,337
■ INWARD T.E.U. TONN.	356,551	551,682	577,267	603,479	753,411	783,279	887,211	11,108,195	771,130	655,050	806,219	831,314	892,137
■ OUTWARD NO. OF EMPTIES	382,481	286,897	376,276	337,308	435,134	496,237	503,225	523,242	417,627	309,546	207,539	341,403	427,153
■ OUTWARD LADEN NO.	247,076	47,197	57,830	66,289	66,202	72,774	79,718	102,102	128,687	121,670	116,319	126,793	102,340
■ OUTWARD LADEN TONN.	298,627	685,248	897,994	1,224,443	1,239,600	662,815	1,435,972	1,767,183	2,263,594	2,103,798	2,103,798	2,329,291	1,913,413
■ OUTWARD T.E.U. TONN.	75,399	61,300	76,317	82,458	86,566	97,318	105,455	128,199	796,598	155,680	483,357	169,653	140,116

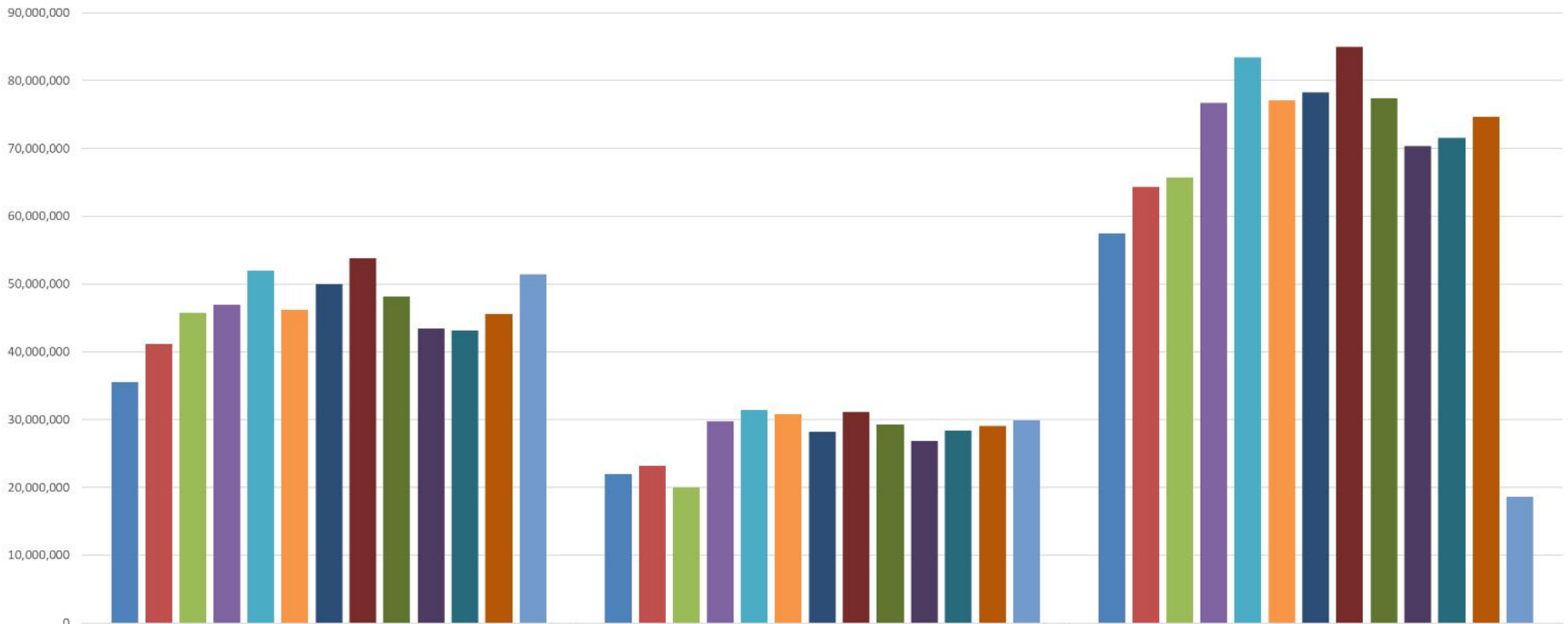
■ INWARD NO. OF EMPTIES ■ INWARD LADEN NO. ■ INWARD LADEN TONN. ■ INWARD T.E.U. TONN. ■ OUTWARD NO. OF EMPTIES ■ OUTWARD LADEN NO. ■ OUTWARD LADEN TONN. ■ OUTWARD T.E.U. TONN.



# CARGO THROUGHPUT

## CLASSIFIED BY INWARD/OUTWARD/THROUGHPUT

### 2007- 2019



	INWARD	OUTWARD	THROUGHPUT
2007	35,544,965	21,928,385	57,473,350
2008	41,195,616	23,177,133	64,372,749
2009	45,757,149	20,018,360	65,775,509
2010	46,928,848	29,815,879	76,744,727
2011	52,022,105	31,439,592	83,461,697
2012	46,222,127	30,870,498	77,092,625
2013	50,005,603	28,276,031	78,281,634
2014	53,771,183	31,180,744	84,951,927
2015	48,111,361	29,276,277	77,387,638
2016	43,470,646	26,894,390	70,365,036
2017	43,099,088	28,436,548	71,535,636
2018	45,605,885	29,071,619	74,677,504
2019	51,416,484	29,860,024	18,674,534

2007 2008 2009 2010 2011 2012 2013 2014 2015 2016 2017 2018 2019

# VESSEL TRAFFIC

CLASSIFIED BY NO OF VESSELS/GRT  
2007 - 2019

